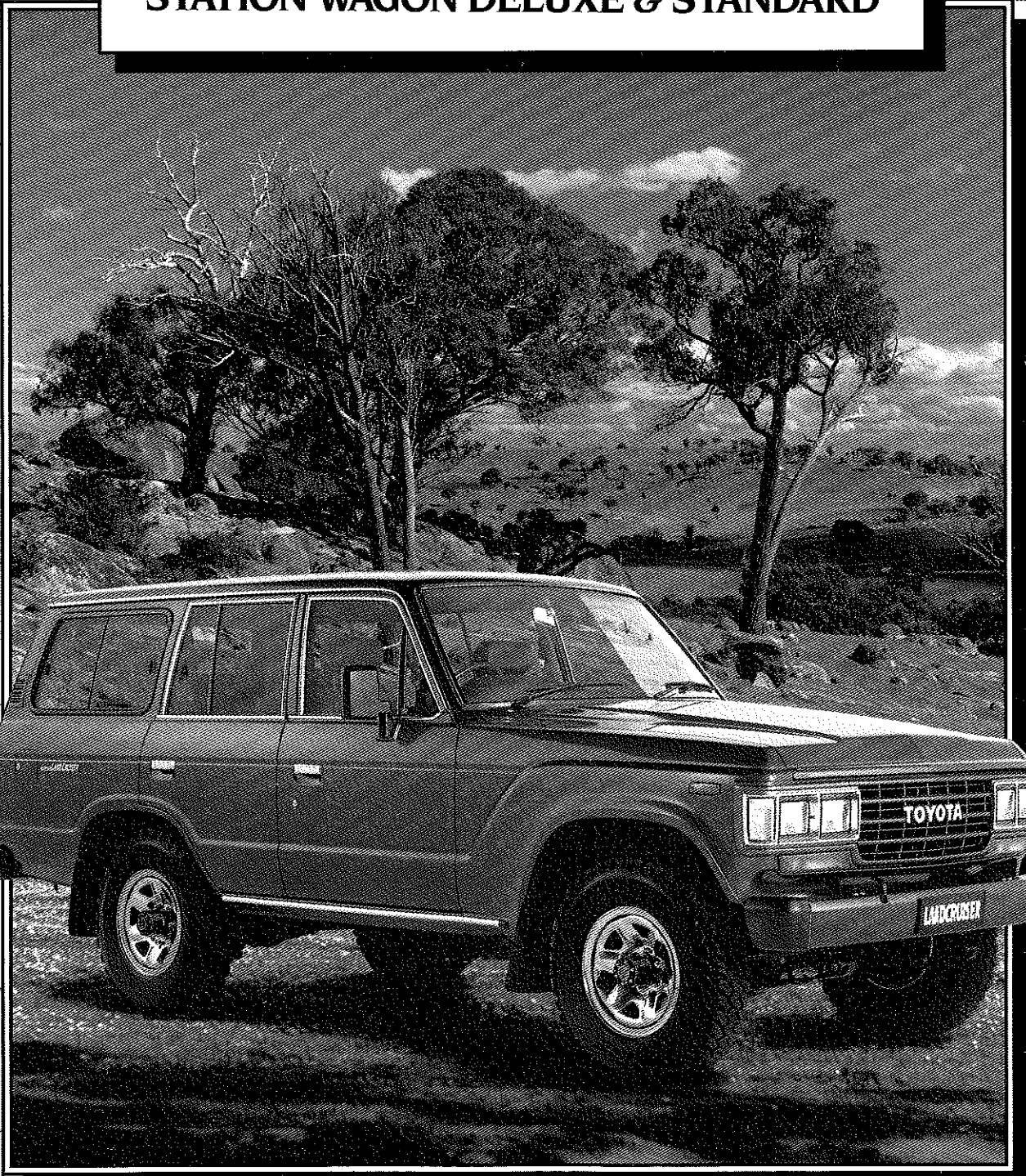
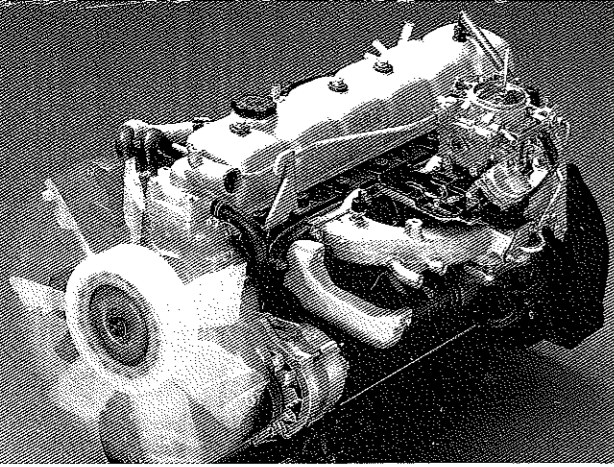


11/87

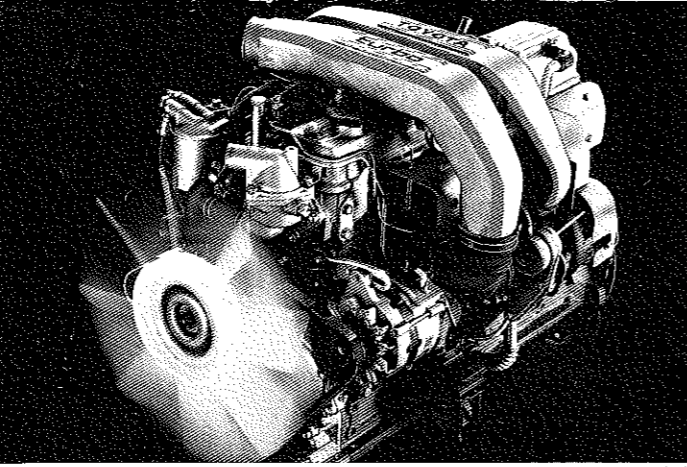
# TOYOTA LANDCRUISER

**STATION WAGON DELUXE & STANDARD**

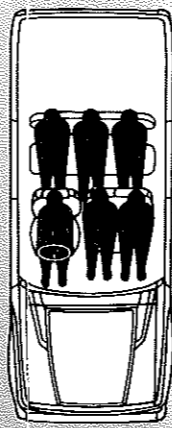




▲ 3F six cylinder petrol engine. 110kW @ 4200 rpm. 284Nm at 2200 rpm. Surpassing power without compromise.



▲ 12H-T six cylinder turbo diesel. 100kW @ 3500 rpm. 315Nm @ 1800 rpm. Direct-injection turbo-charged diesel engine that delivers petrol-like performance with diesel economy.



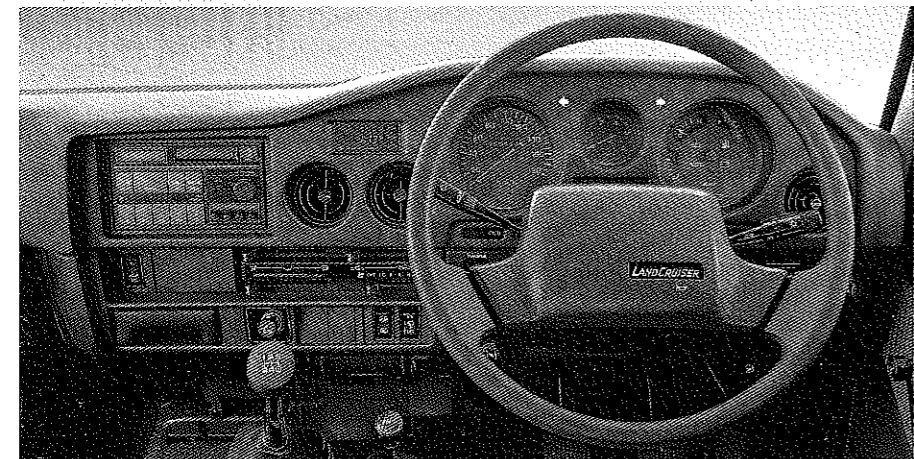
▲ LandCruiser 60 Series station wagon seats six with room to spare: legroom, shoulder room and head room.



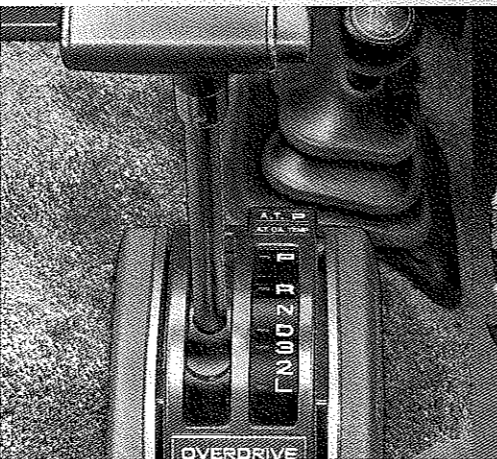
▲ Optional front and rear diff locks maintain traction in difficult off-road conditions.



▲ To increase LandCruiser's already generous cargo space the rear seat folds flat to accommodate extra-big loads.



▲ Full instrumentation that is ergonomically designed clearly displays essential information to the driver. Soft feel steering wheel for long distance comfort. Redesigned at-a-glance heater controls. (Deluxe model shown.)



▲ Four-speed automatic transmission with lock-up clutch and two speed transfer case. Four-wheel-driving has never been easier.



▲ GX model has upper and lower tailgate, while the standard model has vertically hinged doors.



### IMPROVED SUSPENSION – The Big Story Down Under.

LandCruiser's off-road ability is legendary. Now, thanks to redesigned and upgraded suspension and steering that combines with LandCruiser's proven chassis design, it has a level of ride comfort to match. Toyota engineers, working in Australia, have designed a combination of softer springs and double acting gas pressurised shock absorbers. The result is a more supple, progressive suspension with longer wheel travel and increased directional stability. Wherever you go – from highways to hill country, from stony deserts to sandy beaches – LandCruiser has the suspension to make the travelling easier.

**6 CYLINDER DIESEL, TURBO/DIESEL & PETROL**



DELUXE MODEL



STANDARD MODEL

The Toyota LandCruiser 60 Series station wagon, probably Australia's most versatile four-wheel-drive vehicle. With seating for six, space for a mountain of cargo and the four-wheel-driveability to go just about anywhere.

You can specify your vehicle to exactly suit your driving requirements. Start by choosing from one of three different four litre powerplants. If sheer power is your goal then petrol is the way to go. If your

preference is for economy, select the diesel engine. Or combine the best of both worlds with the power and economy of LandCruiser's turbo-charged direct-injection diesel, with water-cooled turbo lubrication and waste gate protected boost control.

Couple your choice of petrol or turbo-charged direct injection diesel with five-speed manual transmission or four-speed automatic with lock up clutch.\* The naturally aspirated diesel engine is available

with a five speed manual transmission. Every model features two-speed transfer case, with electric 4WD/2WD engagement for greater convenience, free-wheeling hubs for reduced noise and fuel consumption, a cavernous 90 litre fuel tank, power steering and ventilated front disc brakes.

LandCruiser lights your way with more powerful quad rectangular headlamps and for your entertainment there's a four speaker, AM/FM stereo,

electronic touch tune, Dolby radio/cassette. There's also the convenience of a rear wiper with 12 second intermittent sweep.\*

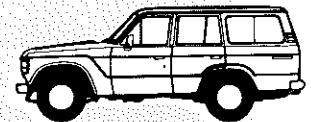
When you decide to buy a LandCruiser you're choosing the most wanted four-wheel-drive on earth. To really make your vehicle special, study the range of models listed overleaf carefully. And for professional advice on options, accessories and equipment talk to your Toyota dealer, he'll be happy to help.

\*Features available on Deluxe models only.

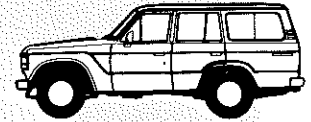
# LANDCRUISER WAGONS SPECIFICATIONS

MODEL	HJ60RG-MRCO Std Spec, Diesel Std Roof, Manual	HJ60RG-MNQ Dlx Spec, Diesel Std Roof, Manual	HJ61RG-MNXO Dlx Spec, Diesel Turbo, Std Roof, Manual	HJ61RG-PNXO Dlx Spec, Diesel Turbo, Std Roof, Auto	FJ62RG-MRCO Std Spec, Petrol, Std Roof, Manual	FJ62RG-MNQ Dlx Spec, Petrol, Std Roof, Manual	FJ62RG-PNQ Dlx Spec, Petrol, Std Roof, Auto
ENGINE	2H Diesel		12H-T Diesel		3F Petrol		
TYPE	6 Cyl. OHV ind. injection		Turbo charged 6 Cyl. with direct-injection		6 Cyl. OHV		
DISPLACEMENT	3980cc		3980cc		3955cc		
BORE & STROKE	91 x 102 mm		92 x 102 mm		94 x 95 mm		
COMPRESSION RATIO	20.7		18.6		8.1		
MAX. POWER (DIN)	76 kW/3500 rpm		100 kW/3500 rpm		110 kW/4200 rpm		
MAX. TORQUE (DIN)	241 Nm/1800 rpm		315 Nm/1800 rpm		284 Nm/2200 rpm		
DRIVE TRAIN	Single dry plate - Diaphragm springs (manual trans. only) Auto transmission with lock up clutch and torque converter						
CLUTCH	Auto transmission with lock up clutch and torque converter						
TRANSMISSION	5-speed manual		4-speed auto		5-speed manual		4-speed auto
GEAR RATIOS 1ST	4.843		2.950		4.843		2.950
2ND	2.618		1.530		2.618		1.530
3RD	1.516		1.000		1.516		1.000
4TH	1.000		0.717		1.000		0.717
5TH	0.845		-		0.845		-
REV	4.843		2.678		4.843		2.678
TRANSFER RATIOS	Low 1.963 High 1.000		Low 2.295 High 1.000		Low 1.963 High 1.000		Low 2.295 High 1.000
DIFF (TYPE & RATIO)*	Limited Slip 4.111						
AXLES							
FRONT CAPACITY	1300 kg						
REAR CAPACITY	2500 kg						
STEERING							
TYPE	Power assisted variable ratio ball and nut						
MIN. TURNING CIRCLE	13.4 m - 2WD; 14.4 m - 4WD (wall to wall)						
BRAKES	Vacuum boosted hydraulic with proportioning and bypass valve						
FRONT	302 mm diameter ventilated disc						
REAR	295 mm diameter drum with self adjusting mechanism						
SUSPENSION							
FRONT	Semi-elliptic leaf spring, double acting gas pressurised hydraulic shock absorbers and stabilizer bar (Front and rear stabilizer bars on all vehicles except HJ60/FJ62RG-MRCO)						
REAR							
WHEELS							
FRONT RIM/TYRE	5.50F-16 Split rim (grey-STD, chrome-DLX)/7.50R-16-6						
REAR RIM/TYRE	5.50F-16 Split rim (grey-STD, chrome-DLX)/7.50R-16-6						
DIMENSIONS & WEIGHTS							
WHEELBASE mm	2730						
OVERALL LENGTH mm	4750						
WIDTH mm	1800		1800		1800		1800
HEIGHT mm	1825	1830	1825	1825	1830	1830	1830
TREAD FRONT mm	1475		1475		1475		1475
REAR mm	1460		1460		1460		1460
DECK LENGTH mm	UFRS975 FRS1765	UFRS965	FRS1755	UFRS965 FRS1755	UFRS975 FRS1675	UFRS965 FRS1755	UFRS955 FRS1755
WIDTH mm	1520		1520		1520		1520
HEIGHT mm	1045	1025	1025	1045	1025	1025	1025
GROUND CLEARANCE mm	225						
KERB WEIGHT							
FRONT kg	1025	1055	1080	1090	950	960	975
REAR kg	1035	1070	1080	1095	1015	1060	1075
TOTAL kg	2060	2125	2160	2185	1965	2020	2050
G.V.M. kg	2810						
MAX. TOW WT W/ BRAKE	2500 kg**						
MAX. TOW WT. W/O BRAKE	750 kg**						
FUEL TANK CAPACITY	90 Litres						
SEATING CAPACITY	6		6		6		6

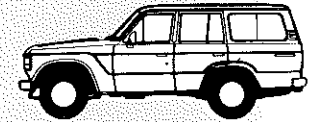
\*\*Subject to State Regulations and Towbar design.



HJ60RG-MRCO  
STD ROOF, DIESEL, STD  
SPEC., MANUAL



HJ60RG-MNQ  
STD ROOF, DIESEL, DLX  
SPEC., MANUAL



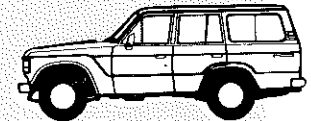
HJ61RG-MNXO  
DLX SPEC., DIESEL, TURBO,  
STD ROOF, MANUAL



HJ61RG-PNXO  
DLX SPEC., DIESEL, TURBO,  
STD ROOF, AUTO



FJ62RG-MRCO  
STD SPEC., STD ROOF,  
PETROL, MANUAL



FJ62RG-MNQ  
DLX SPEC., STD ROOF,  
PETROL, MANUAL



FJ62RG-PNQ  
DLX SPEC., STD ROOF,  
PETROL, AUTO

LANDCRUISER WAGON FEATURES	GX	STD	LANDCRUISER WAGON FEATURES	GX	STD
Halogen headlamps (quad rectangular)	✓	✓	Full instrumentation (including digital clock on GX)	✓	✓
Chrome plated wheels	✓		Limited slip differential	✓	✓
Power steering	✓	✓	Stereo AM-FM radio with electronic tuning	✓	✓
Ventilated front disc brakes with twin boosters	✓	✓	Four speakers plus cassette	✓	
Power assisted clutch	✓		Laminated windscreen (with tint band GX)	✓	✓
Free wheeling hubs	✓	✓	Tinted side and rear windows	✓	
One touch 2WD/4WD selection	✓		Remote fuel lid opener	✓	
Soft feel steering wheel	✓	✓	Door pockets	✓	
Tilt steering	✓	✓	ELR seatbelts on all outside seating positions	✓	✓
Intermittent wipers (front and rear)	✓	Front only	Child restraint anchorages on rear seats	✓	✓
Rear demister	✓	✓	Full fabric seat and door trim	✓	
Rear heater	✓		Floor/load area carpet	✓	

Oh  
What A Feeling!  
TOYOTA

IMPORTANT NOTICE  
Distributed nationally by Toyota Motor Sales Australia Pty. Ltd. (Incorporated in Queensland), 2-28 Alexander Avenue, Taren Point, N.S.W. 2229. Vehicles warranted for 12 months or 20,000 km, whichever occurs first. All information in this brochure was correct at time of publication, however, variations may occur from time to time and Toyota Motor Sales Australia, in so far as it is permitted by law to do so, shall not be liable in any way as a result of any reliance placed by any person on anything contained in this brochure. Also note that some options may only be available in combination with others. Authorised Toyota dealers will provide up-to-date information on all models, options, design features, prices and availability on request.